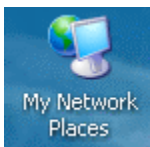

Department of Education Web Site Procedures with WebDAV

What is WebDAV?

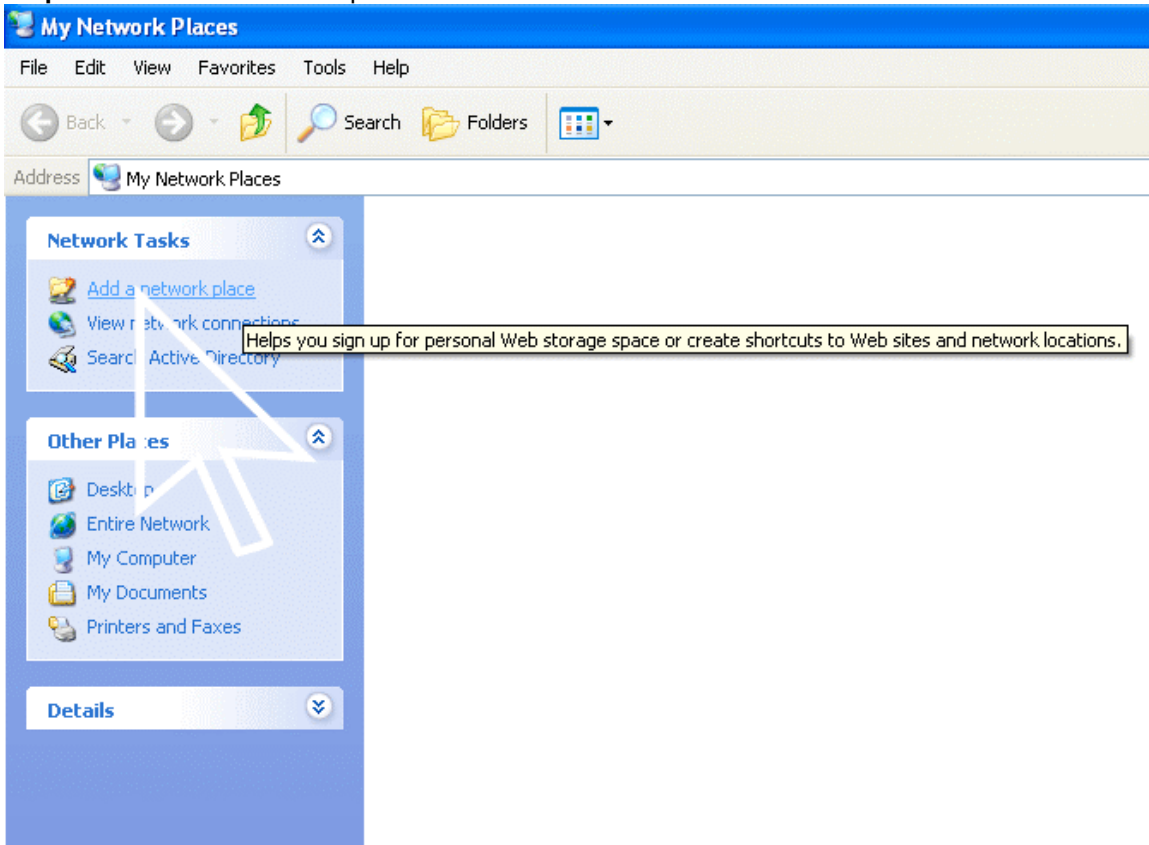
The abbreviation stands for Web-based Distributed Authoring and Versioning. The WebDAV protocol's aim is to make the World Wide Web a readable and writable medium, in line with Tim Berners-Lee's original vision *for the web*. *WebDAV permits web site owners the ability to* create, change and move documents on a web server. This is useful, among other things, for authoring the documents which a web server serves, but can also be used for general web-based file storage that can be accessed from anywhere. Most modern operating systems provide built-in support for WebDAV, making it as easy to use files on a WebDAV server (almost) as if they were stored in a local directory.

To create a WebDAV connection to the site:

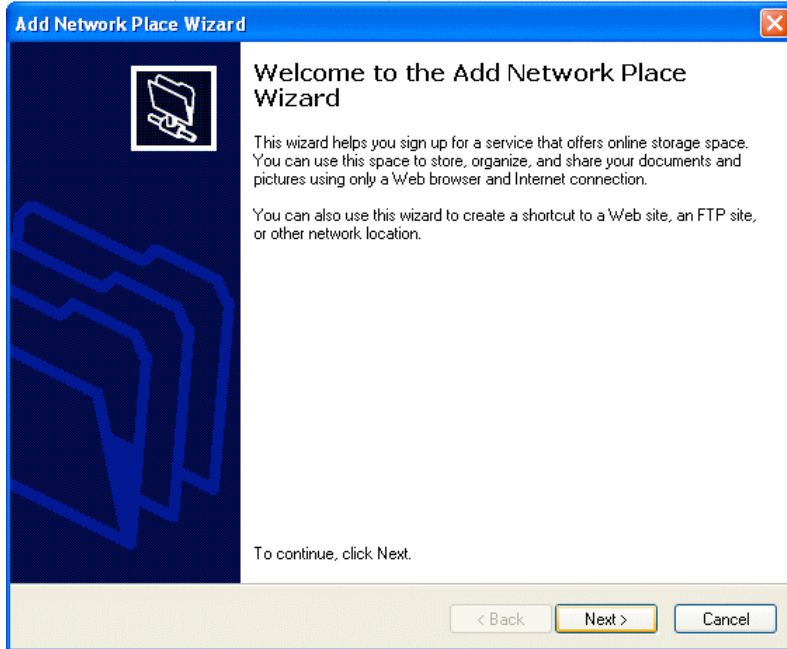
Step 1 - Open My Network Places (Situated on your Desktop)



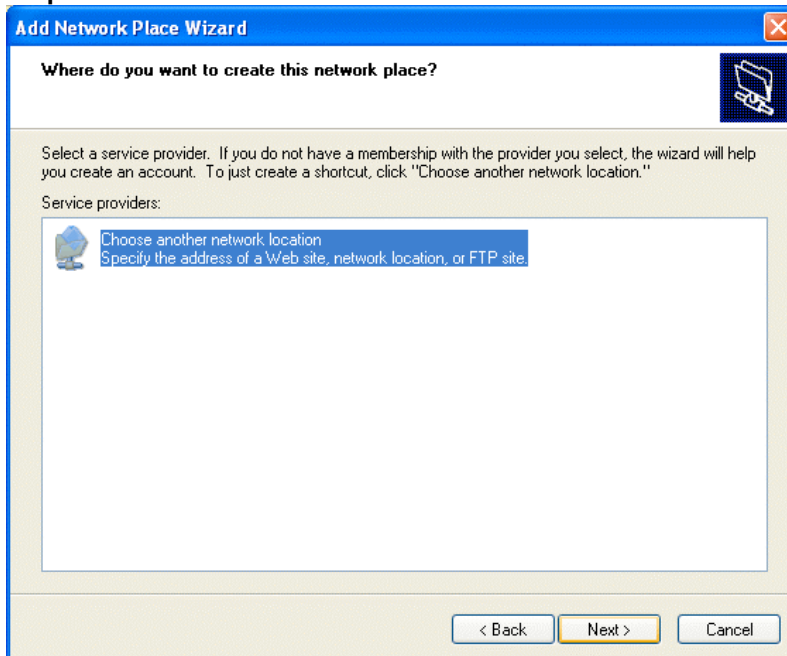
Step 2 - Click Add a network place.



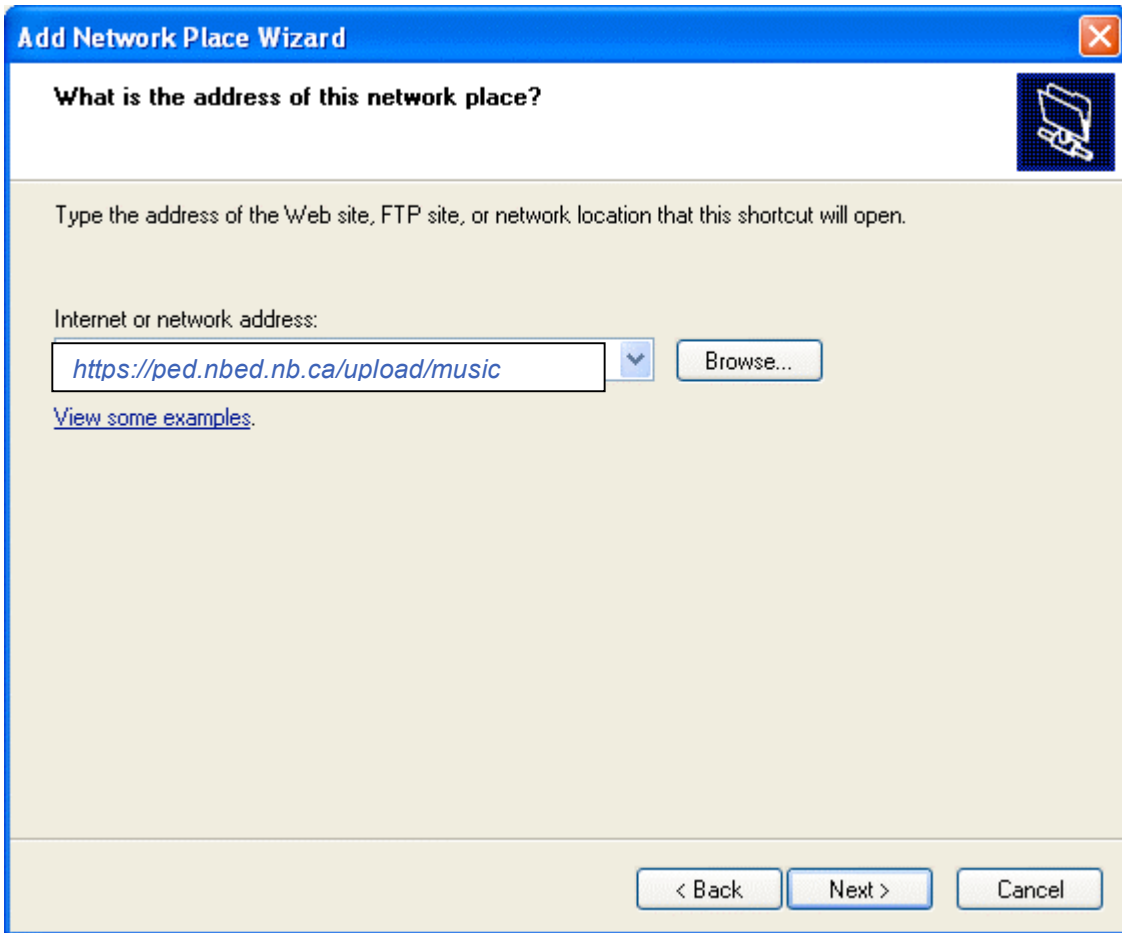
Step 3 - The Add Network Place Wizard starts Click Next (see below)



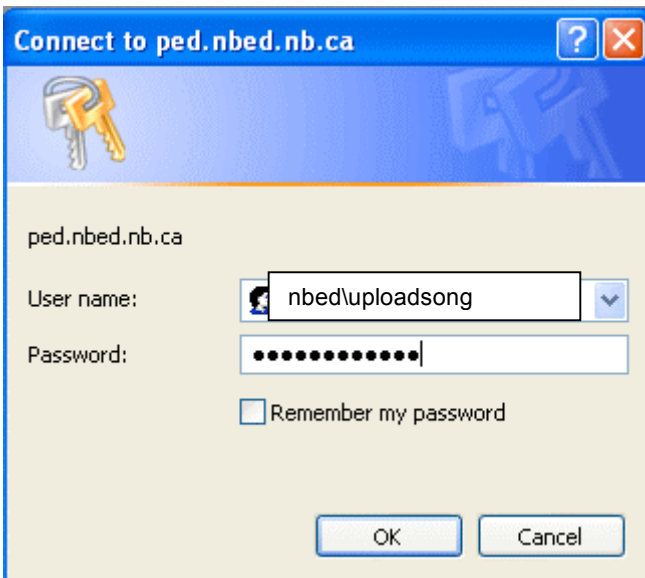
Step 4 - Select Choose another network location and then Click Next



Step 5 (see example 5.1 and 5.2 below) – – To upload your song and/or video you will need to type <https://ped.nbed.nb.ca/upload/music> for the Server Address. Below is an example of the window that will pop-up.



Step 6 – You are prompted, please enter *nbed\uploadsong* for name and for **password** enter *Password123\$*



Step 7 - Enter a name for the network place or accept the default and click **Next**.

Step 8 - Click **Finish**; At this point, a Windows Explorer folder will open where you can copy your files

***Note :** Now that you have created a Network Place, the next time you want to upload content, the only thing you will need to do is go to your Network Place and click on the icon you've create (See example below).

